

WE'VE BEEN WORKING ON THE RAILROAD



A Better Way To Go!



SunRail Feeder Bus Operations and Funding Overview

- FDOT will contract with LYNX and VOTRAN for the operations of feeder bus service to SunRail system:
 - Feeder bus service will be operated during weekdays (Monday – Friday) during AM and PM peak periods.
 - FDOT will pay for net operating subsidy (O&M cost less state and federal funding and fare revenue)
 - Subsidy for initial 7 years of SunRail operation when CFCRC takes over operations
 - Service levels defined by FDOT in consultation with LYNX and local funding partners
- FDOT paid local share for purchase of 16 LYNX buses in support of the feeder bus program (TRIP program)



Feeder Bus Planning History

- **Coordination with Local Jurisdictions:**
 - City of DeBary/Votran
 - ❖ DeBary
 - Seminole County/Lynx
 - ❖ Sanford, Lake Mary, Longwood, Altamonte Springs
 - Orange County/Lynx
 - ❖ Maitland, Winter Park, Sand Lake Road
 - City of Orlando/Lynx
 - ❖ Florida Hospital, LYNX Central Station, Church Street, ORMC/Amtrak
- **Coordination began in 2006**
- **Letters of Understanding executed with Lynx and Votran in 2007**



Sizing the Feeder Bus Plan

How much feeder bus service is needed?

- SunRail projected opening year ridership = 4,114
- About 27% of SunRail riders will use bus
- About 1/3 of LYNX bus riders will use Lymmo and other local routes for “Last Mile” connections at LCS, Church St.
- About 700-800 daily LYNX riders connecting at non-CBD stations

2007 plan was for 9,600 annual hours of LYNX service

- In 2012 FDOT agreed to develop funding strategy for peak period service on #111 (OIA).

2013 plan is for 15,259 annual hours of LYNX service

- Current plan increases service by 59%
- Results in 12-13 riders per bus hour (LYNX average is 26)



How much will it cost?

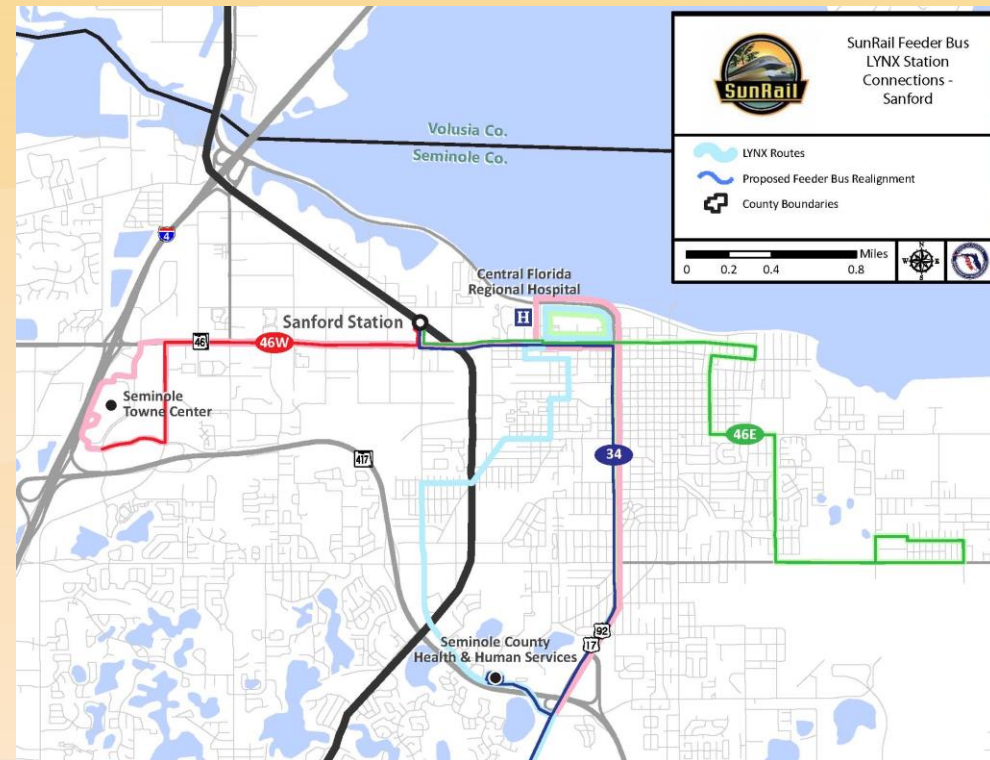
<u>Jurisdiction</u>		<u>FDOT</u>
Seminole County		4,918
Orange County		7,461
<u>Osceola County (18L)</u>		<u>2,880</u>
Incremental Hours =		15,259
Total Annual Cost (FY 2014) =		\$918,000
Ridership Revenue (20.64%) =		<u>\$189,000</u>
Net Annual Contract Cost =		\$729,000

- (1) Annual cost based on LYNX' FY 2013 Regional Model cost per hour = \$58.42, less one-half of farebox revenue recovery (20.64%). Net FY 2013 cost per hour = \$46.36.
- (2) FY 2013 costs inflated to FY 2014 dollars using 3.0% inflation rate.



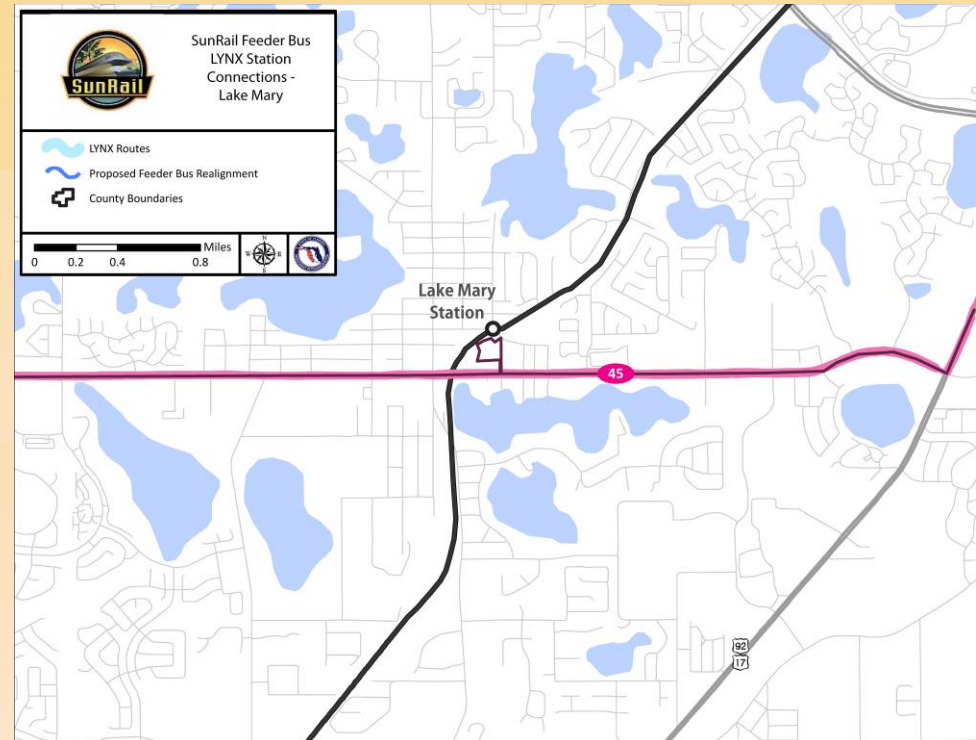
Sanford Station

- Serves Activity Centers: downtown Sanford(34, 46E), Central Florida Regional Hospital (46E), Seminole Towne Center (46W), Seminole County Health & Human Services (34), Seminole Centre (34), Central Florida Family Health Center (46E).
- #34 – Reroute via 17/92 (French Ave.). Increase peak period service to 30 minutes.
- #46E – Eliminate French Ave. service. Increase peak period service to 30 minutes.
- #46W – Eliminate French Ave. service. Increase peak period service to 30 minutes.



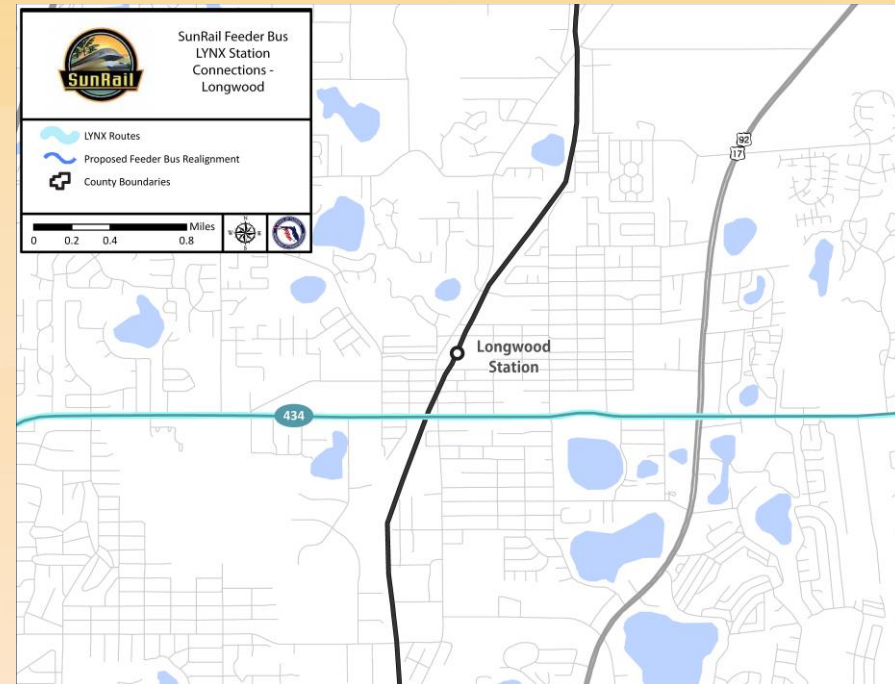
Lake Mary Station

- Serves Activity Centers: Seminole Centre (45), Heathrow Business Park (45).
- #45 -- Increase peak period service to 30 minutes.



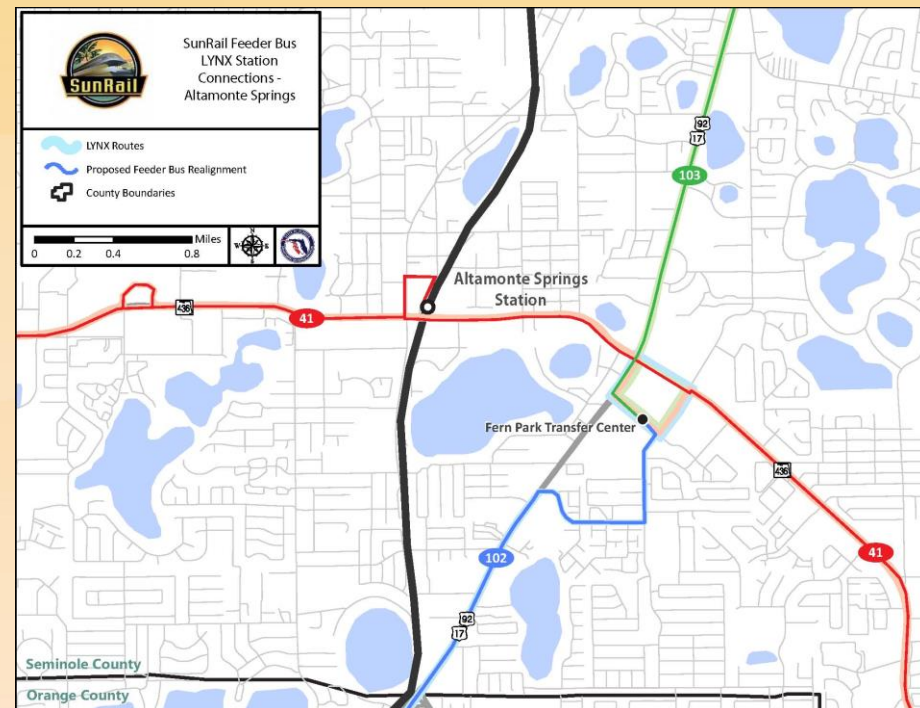
Longwood Station

- Serves Activity Centers: Oviedo (434), Oviedo Market Place (434), Winter Springs HS (434), South Seminole Community Hospital (434), University of Central Florida (434), Springs Village Shopping Centre (434).
- #434 -- Adds 30-minute peak period service on portion of route (e.g., South Seminole Community Hospital to Winter Springs City Hall).



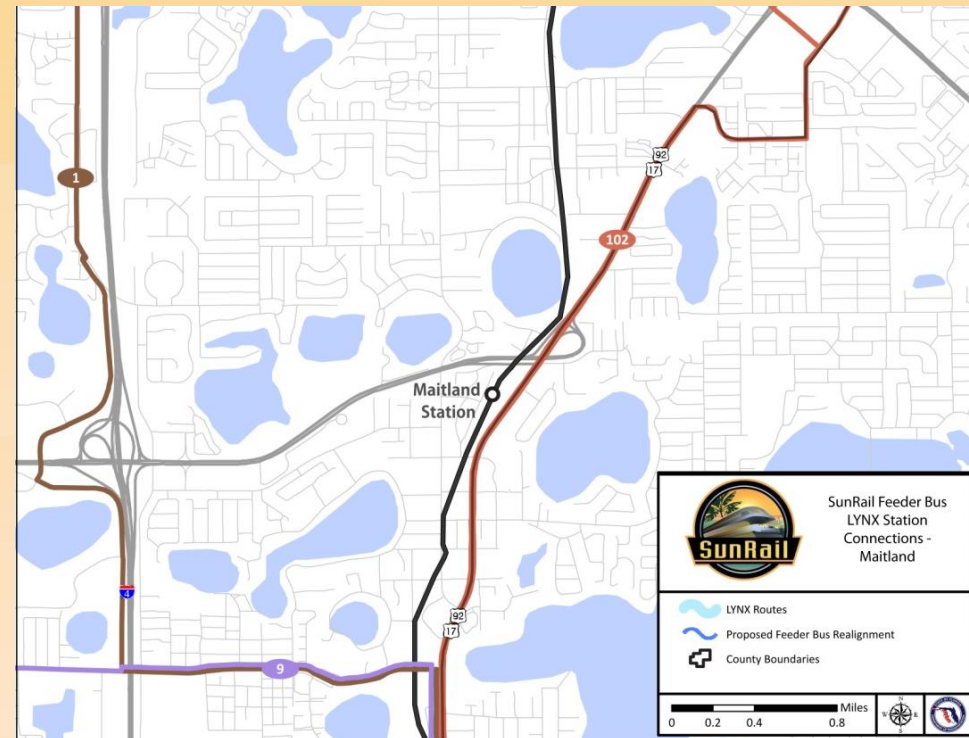
Altamonte Springs Station

- Altamonte Springs station replaces LYNX Fern Park Transfer Center
- Serves Activity Centers: Altamonte Mall (41), Brantley Square (41), Apopka (41), US Post Office (41), Florida Hospital Altamonte (41).
- #41 – Extend to Altamonte Springs station.
- #102 & 103 Options –
 - Either extend both routes to Altamonte Springs station;
 - Passengers can transfer from 103 to 102 at Fern Park and then use Maitland Station;
 - Passengers can transfer to #41 and then use Altamonte Springs Station.



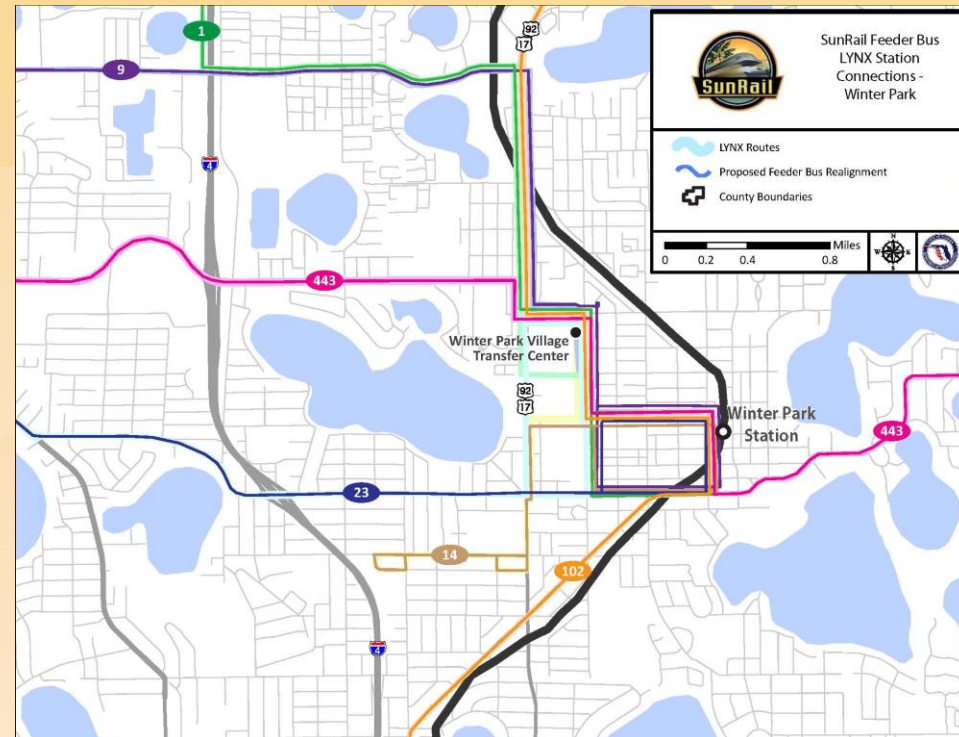
Maitland Station

- Buses stop on-street adjacent to station
- Serves Activity Centers: downtown Maitland (102), Winter Park (102), Winter Park Village (102).
- #102 – On-street connection.



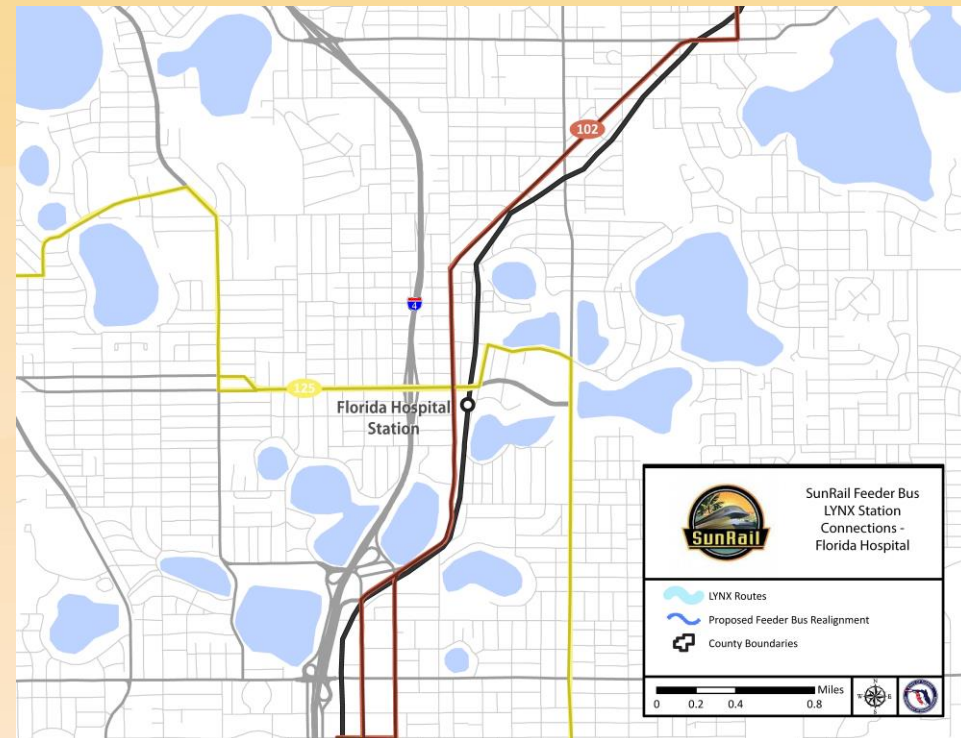
Winter Park Station

- Off-peak bus transfers and layovers remain at Winter Park Village SuperStop
- Serves Activity Centers: downtown Winter Park, Maitland Center / Lake Destiny (1), Rollins College (443), Valencia College (1,9), Eatonville (9), Rosemont SuperStop (9,23), Florida Hospital Winter Park (443)
- # 1 – Extend to Winter Park station during peak periods
- # 9 – Extend to Winter Park station during peak periods
- # 14 – Extend to Winter Park station during peak periods
- # 23 – Extend to Winter Park station during peak periods
- # 102 – Provide connection at Winter Park station
- # 443 – Provide connection at Winter Park station



Florida Hospital Station

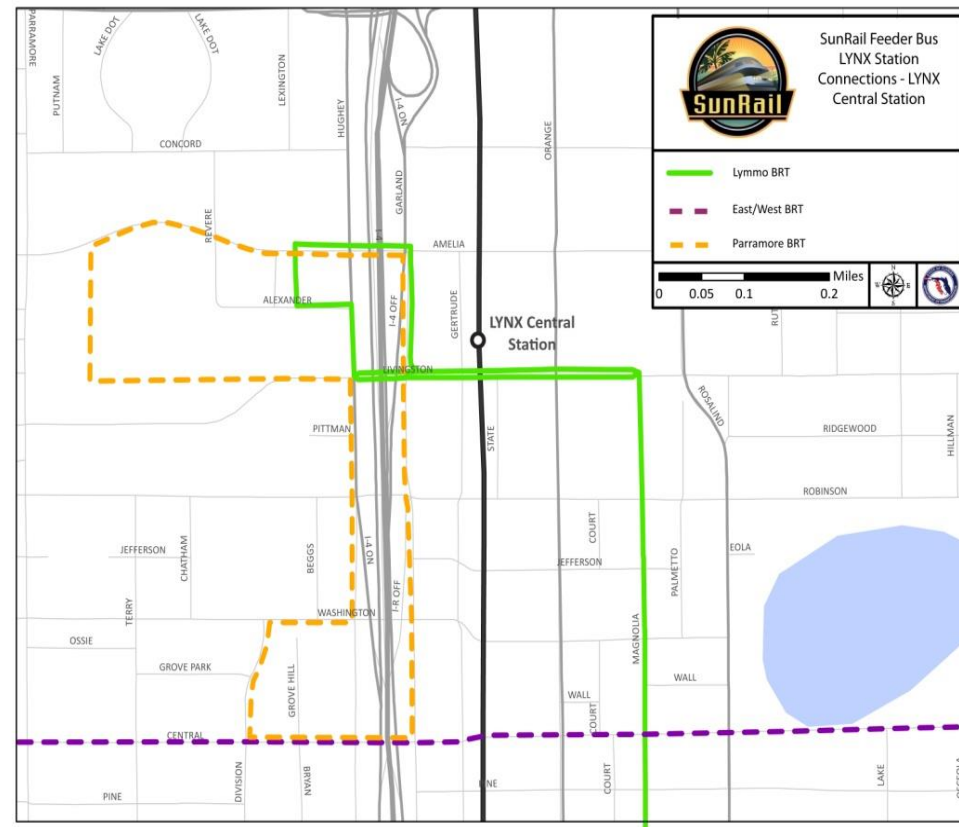
- Serves Activity Centers: Florida Hospital, Winter Park (102), Winter Park Village (102), Edgewater Hospital (125), Park Promenade Plaza (125), West Oaks Mall (125), Orlando Science Center (125), Orlando Museum of Art (125).
- #102 – Connection to Florida Hospital station
- #125 – Connection to Florida Hospital station



LYNX Central Station

- Direct connection to Lymmo & Lymmo extensions (Parramore, East/West)
- Serves Activity Centers: Downtown Orlando, Orange County Courthouse, Bob Carr Performing Arts Center.

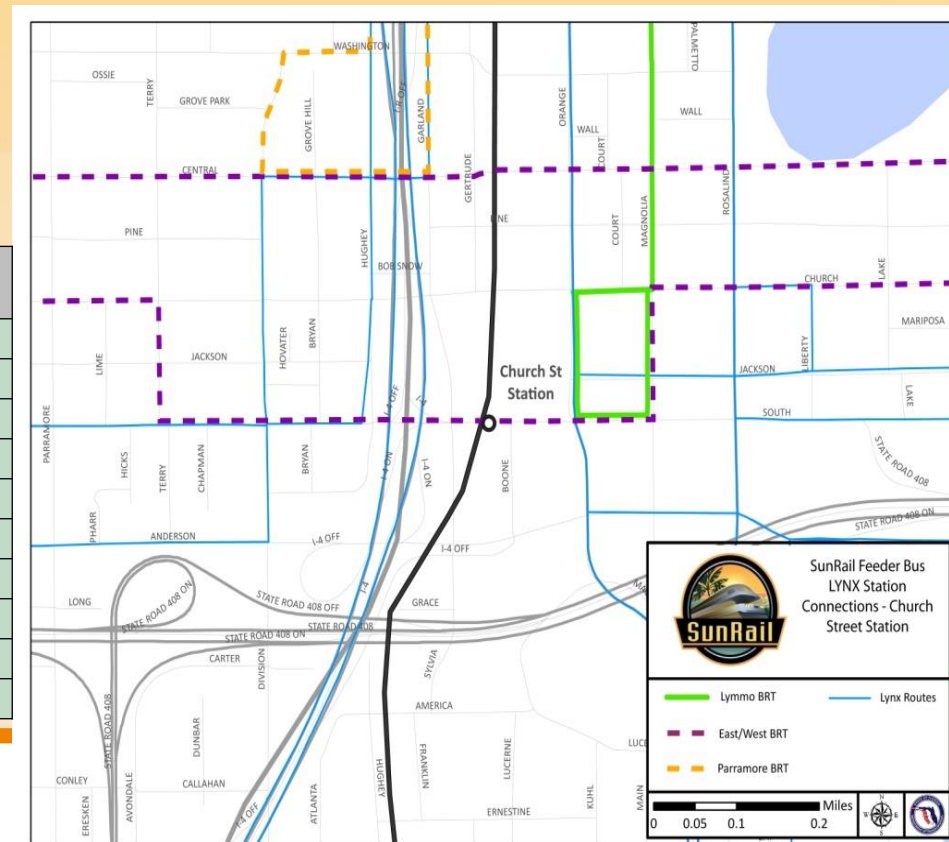
LYNX Connection	LYNX Connection
Lymmo	36 – Lake Richmond
Lymmo Parramore	38 – International Drive
Lymmo East/West	40 – Americana Blvd. / Universal
3 – Lake Margaret	48 – W. Colonial / Pine Hills
4 – South US 441 / Kissimmee	49 – W. Colonial / Pine Hills
7 – S. Orange Ave. / Florida Mall	50 – Magic Kingdom
8 – W. Oak Ridge / Int'l Drive	51 – Conway Rd. / OIA
11 – S. Orange Ave. / OIA	54 – Old Winter Garden Rd.
13 – UCF	102 – Orange Ave. / US 17-92
15 – Curry Ford / Valencia East	104 – East Colonial
17 – North US 441 / Apopka	125 – Silver Star Road
18 – S. Orange Ave. / Kissimmee	204 – Clermont Xpress
20 – Malibu St. / Mercy Drive	300 – Downtown Disney Direct
21 – Carver Shores	313 – Winter Park
25 – Mercy Drive / Shader Road	319 – Richmond Hts.
28 – E. Colonial / Azalea Park	441 – FastLink 441
29 – E. Colonial / Goldenrod Rd.	1792 – FastLink 1792



Church Street Station

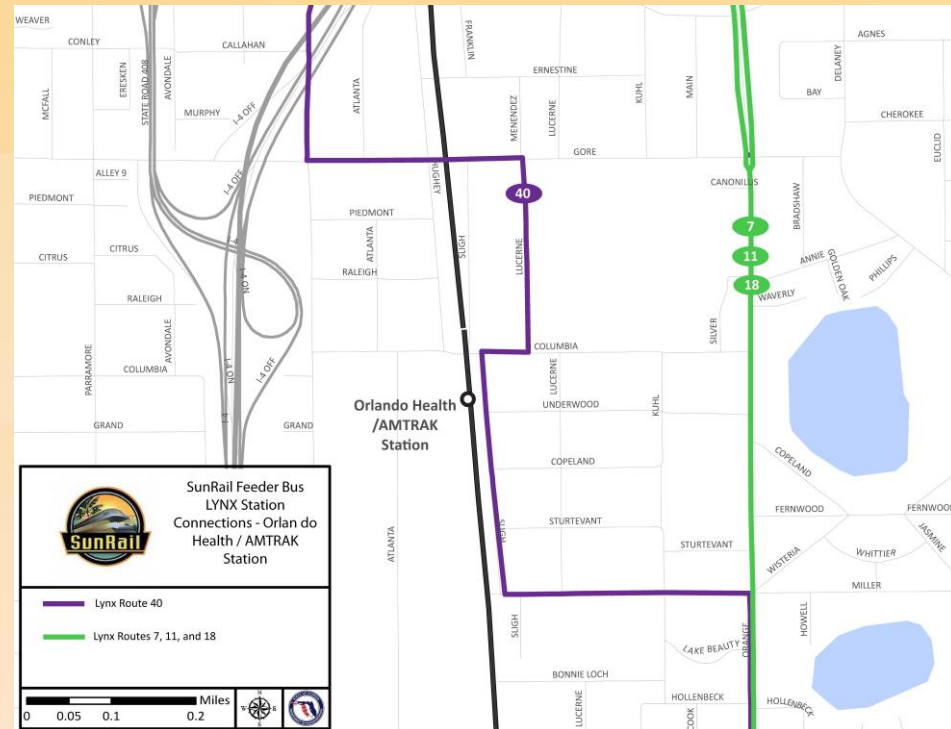
- Direct connection to East/West Lymmo; Close to Lymmo and Parramore
- Serves Activity Centers: Downtown Orlando, Church Street Station, Amway Center, Orlando City Hall, SunTrust Center.
- Buses stop on Orange Ave. (3,7,11,13,18,51,313) and Garland/Hughey (36)

SunRail Station Connection	Route	Frequency	Change Proposed
Church St.	Lymmo	10-min.	None
Church St.	E/W Lymmo	10-min.	None
Church St.	3	60-min.	None
Church St.	7	60-min.	None
Church St.	11	30-min.	None
Church St.	13	60-min.	None
Church St.	18	60-min.	None
Church St.	36	30-min.	None
Church St.	51	60-min.	None
Church St.	313	60-min.	None



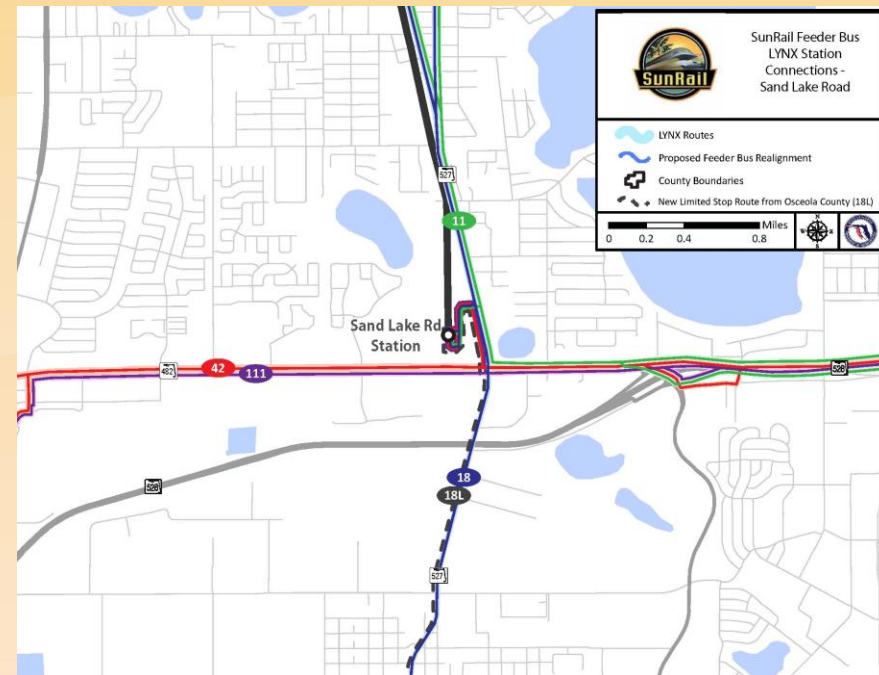
Orlando Health / Amtrak Station

- Serves Activity Centers: Orlando Amtrak, Lucerne Medical Center, Arnold Palmer Hospital, Orlando Regional Medical Center, SoDO (7,11,18), Edgewood (7,11,18), The Mall at Millenia (40), Universal Orlando (40).
- Short walk to S. Orange Ave. (7,11,18)
- #40 – Direct connection to OH / Amtrak station



Sand Lake Road Station

- Serves Activity Centers: Orlando International Airport (11, 111), Florida Mall (42, 111), Kissimmee (18, 18L), Osceola Square Mall (18, 18L), Orlando Premium Outlets (42), International Drive (42), Destination Parkway (42, 111)
- #11 – Connect to SLR station during peak periods
- #18 – Connect to SLR station during peak periods
- #42 – Connect to SLR station during peak periods
- #111 – Add 30-minute service during peak periods
- #18L – New limited stop, peak period service between SLR and Kissimmee Intermodal; buses run every 60 minutes.



Questions?



Feeder Bus Update

SUMMARY OF FDOT AND LYNX FEEDER BUS INCREMENTAL BUS-HOURS

SunRail Station Connection	Route	Nov. 2012 FDOT/LYNX	7/11/2013 LYNX/CTG	8/23/2013 LYNX	9/11/2013 LYNX	10/16/2013 LYNX (1)	10/16/2013 LYNX (2)	Oct. 29, 2013 FDOT
Sanford	103	887	0	N/A	N/A	N/A	N/A	N/A
Sanford	34	840	0	8289	8289	4321	4321	1920
Sanford	46E	0	0	4813	-435	2074	2074	-435
Sanford	46W	0	0	-407	-2911	-2301	-2301	-407
Lake Mary	45	2176	1879	7357	2813	4913	4913	1920
Longwood	434/505	1828	2040	6177	8	1838	1838	1920
Altamonte Springs	102	0	4594	7429	7424	7404	0	0
Altamonte Springs	103	887	4647	8448	8200	8200	2458	0
Altamonte Springs	41	0	0	2637	0	51	51	0
Maitland	102	0	0	0	0	0	0	0
Winter Park	102	0	0	0	0	0	0	0
Winter Park	1	0	510	2202	1477	N/A	N/A	960
Winter Park	9	0	510	3610	-100	1800	1800	960
Winter Park	14	0	510	602	1856	N/A	N/A	0
Winter Park	23	0	510	4856	-128	N/A	N/A	0
Winter Park	443	0	0	6415	230	233	233	0
Florida Hospital	102	0	0	0	0	0	0	0
Florida Hospital	125	0	0	0	-141	2936	2936	0
OH/Amtrak	18	0	0	0	0	346	346	N/A
OH/Amtrak	40	0	0	0	0	0	0	0
Sand Lake Rd	111	0	4080	11725	251	4155	4155	3621
Sand Lake Rd	11	0	0	7194	4641	4641	4641	960
Sand Lake Rd	18	0	0	9774	246	0	0	0
Sand Lake Rd	42	0	0	4997	4575	4531	4531	960
Sand Lake Rd	18L	2995	6120	7296	7296	7296	7296	2880
Incremental Hours		9613	25400	103414	43592	52436	39291	15259

